

Revision History

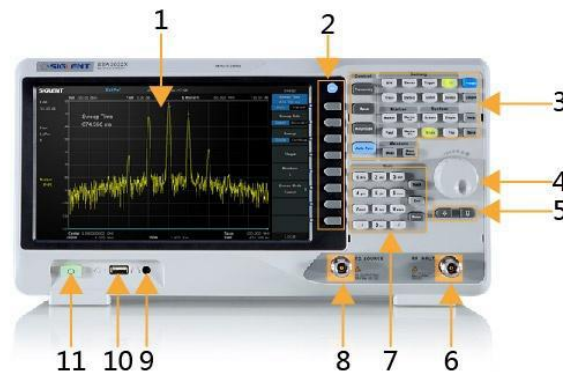
Version	Revision
V1.2.9.2a 2018/11/1	<ol style="list-style-type: none"> 1. This firmware must be upgraded from V1.2.8.3 or later. If your SSA3000X has an earlier version, please update to V1.2.8.1 first, then V1.2.8.2, then V1.2.8.3, and then proceed to update to the latest version. 2. Add trigger slope in Video Trigger 3. Optimize Trace Math, and SCPI command 4. Optimize the noise during Demod in zero span 5. Optimize the screen text display 6. Optimize the Auto Tune 7. Optimize the log scale in CSV file
V1.2.9.1 2018/04/10	<ol style="list-style-type: none"> 1. This firmware must be upgraded from V1.2.8.1 or later. If your SSA3000X has an earlier version, please update to V1.2.8.1 first and then proceed to update to the latest version. 2. Fixed bugs on peak search and next peak. 3. Optimize SCPI commands for peak table, screenshot, etc. 4. Optimize the LOG X-scale for EMI test. 5. Optimize the Quasi-Peak detector accuracy for EMI test.
v1.2.8.5a 2017/9/20	<ol style="list-style-type: none"> 1. This firmware must be upgraded from V1.2.8.1 or later. If your SSA3000X has an earlier version, please update to V1.2.8.1 first and then proceed to update to the latest version. 2. Fixed v1.2.8.5 bugs on Refl Mode. 3. Fixed v1.2.8.5 bugs on language and file.
v1.2.8.5 2017/9/10	<ol style="list-style-type: none"> 1. This firmware must be upgraded from V1.2.8.1 or later. If your SSA3000X has an earlier version, please update to V1.2.8.1 first and then proceed to update to the latest version. 2. Add 1 Hz/3 Hz RBW function. 3. Fixed some bugs on SCPI. 4. Fixed some bugs on sweep, Log scale, and display.
V1.2.8.3 2017/6/10	<ol style="list-style-type: none"> 1. This firmware must be upgraded from V1.2.8.1 or later. If your SSA3000X has an earlier version, please update to V1.2.8.1 first and then proceed to update to the latest version. 2. Improved the stability of sweep and avg detect. 3. Fixed some bugs on sweep, frequency counter and Log-Log scale. 4. Fixed some bugs on SCPI and the AMK option.
V1.2.8.2 2017/2/14	<ol style="list-style-type: none"> 1. This firmware must be upgraded from V1.2.8.1 or later. If your SSA3000X has an earlier version, please update to V1.2.8.1 first and then proceed to update to the latest version. 2. Add socket/telnet-scpi, you can operate remote control through LAN port without NI-VISA installed. Please see SSA3000X 's Programming Guide for more details. 3. Change two limit lines in different colours. 4. When quit from TG, stay in "Auto" sweep.

Version	Revision
	<ul style="list-style-type: none"> 5. Lower some spurs when FFT. 6. Improve the stability.
V1.2.8.1 2016/11/3	<ul style="list-style-type: none"> 1. Add "PNG " file type for screenshot. 2. Support TG in RBW less than 30 kHz. 3. Modify default TG output power, -20 dBm in spectrum analyzer mode and 0 dBm in reflection measure mode, and some other TG issues. 4. Updating the format of "LIM " file. After this firmware , the old limit files will not be supported. You can recreate them through "EasySpectrum" free software easily. 5. After this firmware, do not support downgrade operation.
100.01.02.07.07 2016/6/29	<ul style="list-style-type: none"> 1. Add "amplitude correction editing functions" 2. Add "input impedance switching function between 50Ω and 75Ω" 3. Add "jpg format screenshot function" 4. Add "Reset & Clear function" 5. Separate the "File Type" into "View Type" and "Save Type" in the file menu.
100.01.02.07.06 2016/5/13	<ul style="list-style-type: none"> 1. Fixed "error importing calibration files into machine."
100.01.02.07.05 2016/4/19	<ul style="list-style-type: none"> 1. Add USB-GPIB connect function 2. Add boot reset function 3. Fixed "Spectrum Monitor function can be opened when using normalize or reflection meas"
100.01.02.07.03 2016/3/30	<ul style="list-style-type: none"> 1. Fixed "button does not respond after self test"
100.01.02.07.02 2016/3/15	<ul style="list-style-type: none"> 1. Fixed " the device can not start up when start option is user configuration" 2. Fixed " the problem of frequency count large errors" 3. Fixed "the device can not hunt signal when setting zero span occasionally"
100.01.02.07.01 2016/2/29	<ul style="list-style-type: none"> 1. Add "X log axis" 2. Add "license inputbox" 3. Add "file save alert dialog "
100.01.02.07.00 2016/1/15	<ul style="list-style-type: none"> 1. Add "EMI function " 2. File system upgrade

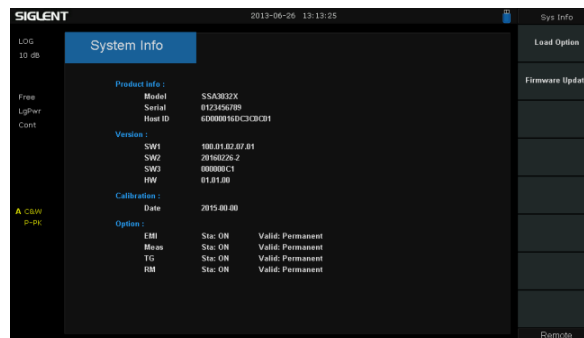
Update Instructions

WARNING: For updates to 1.2.9.1 and up, you must upgrade sequentially from V1.2.8.3 or later. If your SSA3000X has an earlier version, please update to V1.2.8.1 first, then V1.2.8.2, then V1.2.8.3, and then proceed to update to the latest version.

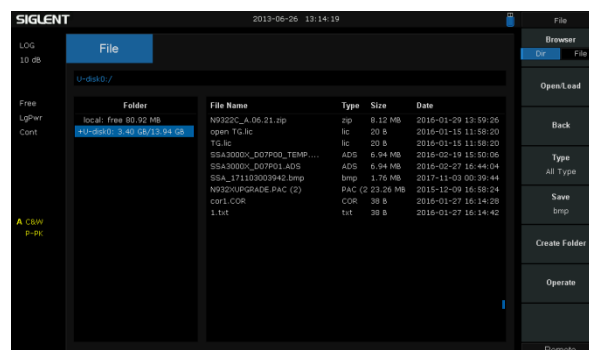
- 1." Copy the update file (*.ads) to a FLASH type U-disk, and then connect the U-disk to the USB host port(10) of the instrument.

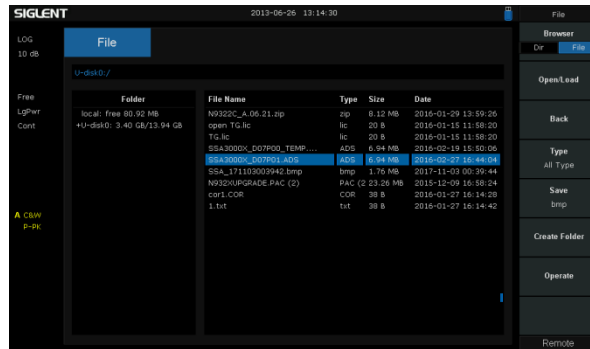


- Press the **System** key on the front panel, and then softkey "System->System Info->Firmware Update", to enter the interface of the file browser.

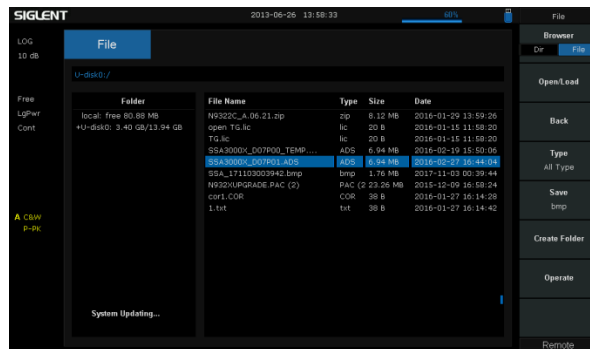


3. Select “U-disk” thru the knob on the front panel, press “Browser”, and then select the correct ADS file using the knob





- Press “Open/Load” to start the update. A progress bar is displayed during the update. When updating complete, the spectrum analyzer will restart automatically.



WARNING:

DO NOT shut down the instrument during updating